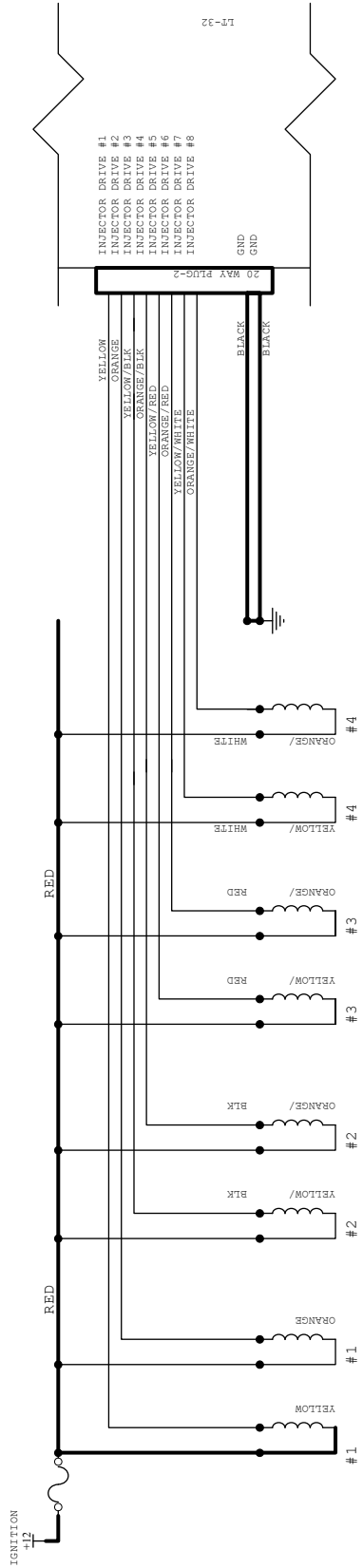
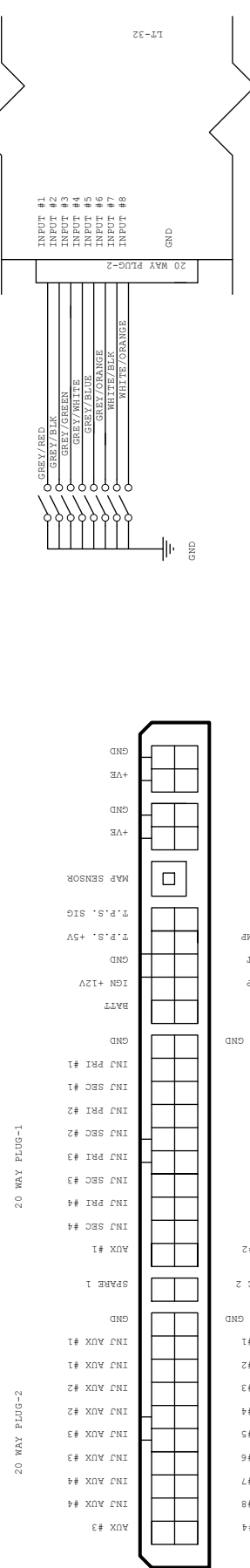


MICROTECH LT-32 AUX INJECTOR WIRING



LT-32 FRONT PIN-OUTS



CAN SETUP -
 FORMAT = 2.0A 11 BIT
 SPEED = 1M BIT
 CAN ID = 010 HEX
 (FACTORY DEFAULT)

NOTE -
 UNITS HAVE 120 OHM
 TERMINATING RESISTOR
 INSTALLED

LT-32 REAR PIN-OUTS



MICROTECH LT-32
 Size: A3
 Number: 1-001-015
 Date: 1-Jul-2015
 File: C:\ADP\XHL13\PLUG-501

Revision: 1.0
 Sheet of: 1
 Drawn By: JDOZ